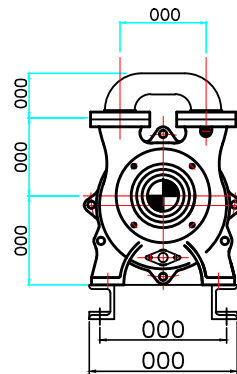
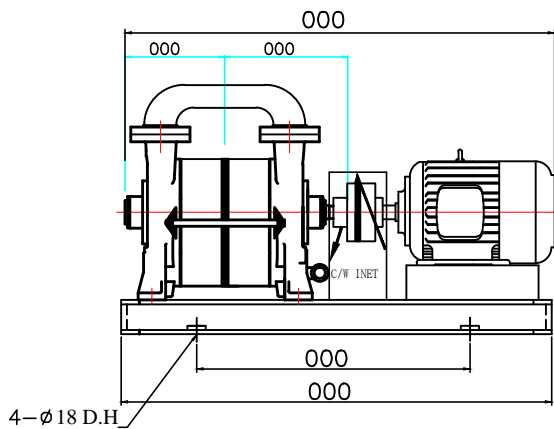
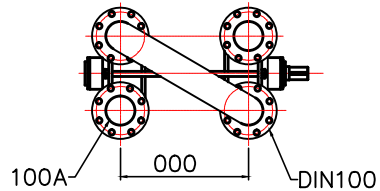


## SPECIFICATIONS

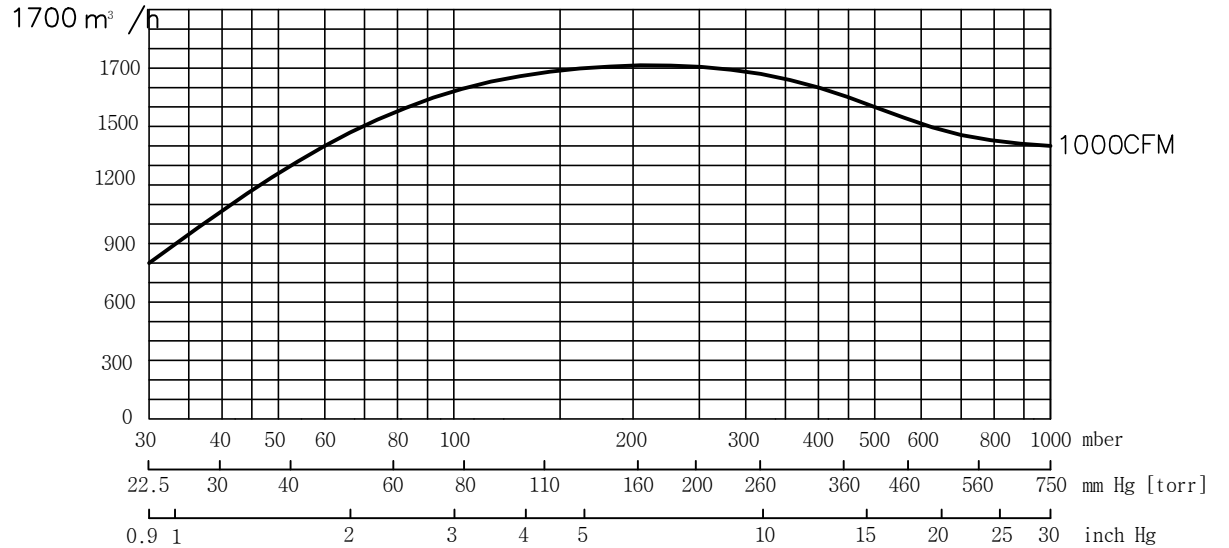
Design	25760 Lit./min(50Hz)
Displacement	28000 Lit./min(60Hz)
Speed	980 r.p.m. (50Hz)
	1150 r.p.m. (60Hz)
Normal usage vacuum pressure	Under Torr
Attainable vacuum pressure	Max 17torr
Suction port diameter	DIN 100A (2) (Option:B.S.P.T)
Motor	Horizontal Motor Standard 3-Phase 220/380V 60Hz 75kW 6P
Water Capacity	15°C 기준 125L/MIN
Weight	BODY W,T 700 Kg
Painting	Color- VL951 (Company's standard)
Allowable ambient temp.	-10 - 40C

-1 Excluding motor and some other parts.



## Curve referred to dry air at 20° C (68° F) SUCTION CAPACITY

냉각수 온도 15°C 기준



### ACCESSORIES(Option)

- Vacuum Manual Valve
- Vacuum gauge
- Vacuum Check Valve
- Separator Tank

### CONSUMABLE LIST

(Vacuum.ENG GENUINE PARTS)

Designation	Specification	Quantity/set
M/C Seal	ø 75	2
Bearing	5314,NU314 (Special Heat - resisting grease)	2
V-PULLY	ø	1
Shaft Key	ø60 80 X 9	1

DWG DATE	SCALE		TITLE
2006.04.15	N/S		WATER RING V/P
DWGBY	DESBNBY	CHDBY	CLIENT
			LOCATION
진공엔지니어링			DWG NO
			JHRP2-280

- 품질 개선을 위해서 예고없이 변경 될수 있음.
- Not binding dimension that can change according to motor make